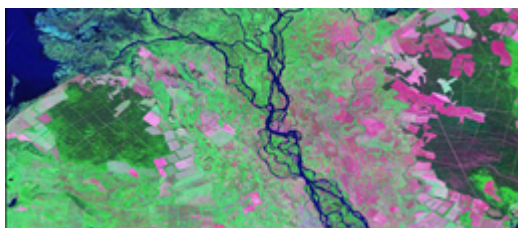


A new Erasmus + KA2 program: “Farming (Precision Agriculture) and New Technologies.”



From June 11-22 this year, the Swedish University of Agricultural Sciences (SLU) will host the first intensive program of a new Erasmus + KA2 program on Farming (Precision Agriculture) and New Technologies. This initial session will gather 14 professors and 26 students from the seven European partner institutions in Agriculture and Life Sciences. The 2-week intensive program includes seminars, projects, field visits and international group work in cooperation with our industrial partners. The session will be followed by a discovery internship period in companies of the agricultural sector.

This year, the program welcomes teams of professors and students from Sweden, Finland, Greece, France, Belgium and Portugal.

Program



Learn more about this project.